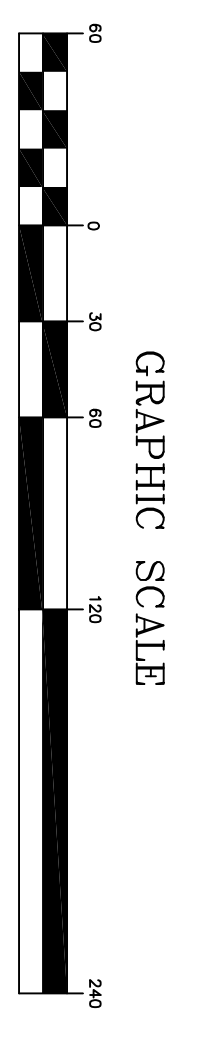


BARTON CREEK RESERVE

BEING A PORTION OF THE ADAMS PLACER AND THE AMERICAN PLACER, U.S. MINERAL SURVEY NO. 13491
LOCATED IN THE NE 1/4 OF SEC. 26 AND THE NW 1/4 OF SEC. 25, T.6 S., R.78 W. OF 6th P.M.
SUMMIT COUNTY, COLORADO
SHEET 2 of 2



NOTE: ACCORDING TO COLORADO LAW, YOU MUST EXAMINE ANY RECORDS BASED UPON ANY DEPOSIT IN THIS SURVEY WITHIN THREE YEARS AFTER YOU FIRST DISCOVER SUCH RECORDS. IN NO EVENT SHALL ANY ACTION BASED UPON ANY DEPOSIT WITHIN THREE YEARS OF COMPLETION OF THIS SURVEY BE SUBJECT TO THE STATUTE OF LIMITATIONS. SUMMIT COUNTY, COLORADO

CURVE TABLE - R.O.W. CENTERLINE

CURVE	RADIUS	LENGTH	CHORD	BEARING	DELTA
CR-1	100.00'	14.97'	14.97'	S 134°24'44" W	180°14'
CR-2	505.39'	376.71'	564.05'	S 26°06'49" W	47°42'29"
CR-3	225.00'	167.48'	184.90'	S 30°01'14" W	34°32'29"
CR-4	105.46'	82.15'	84.80'	S 41°10'18" E	48°39'45"
CR-5	11.95'	11.95'	11.95'	S 14°58'11" E	90°07'42"
CR-6	75.00'	11.95'	11.95'	S 14°58'11" E	90°07'42"
CR-7	75.00'	66.70'	64.53'	S 45°00'42" E	50°37'50"

CURVE TABLE - BOUNDARY

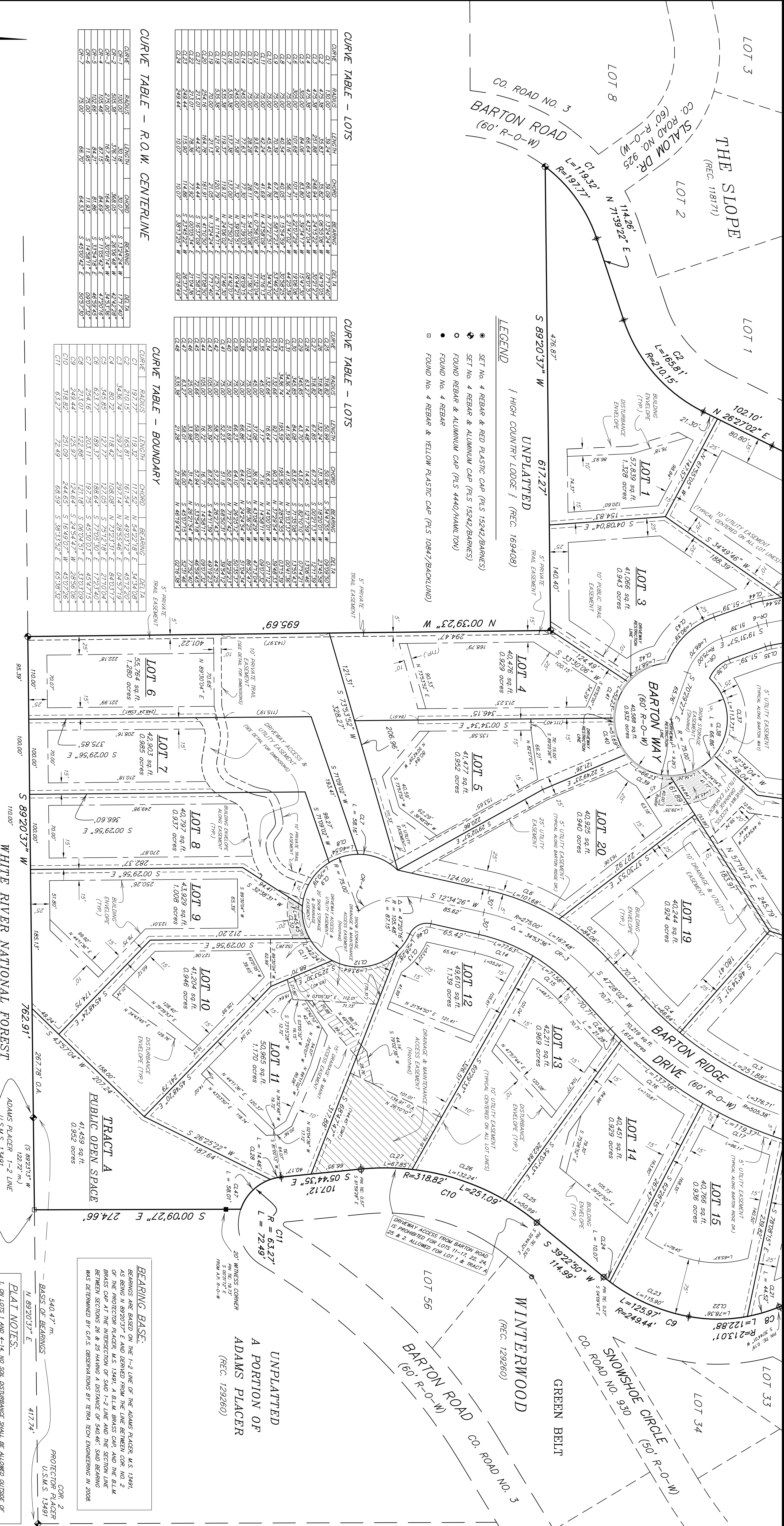
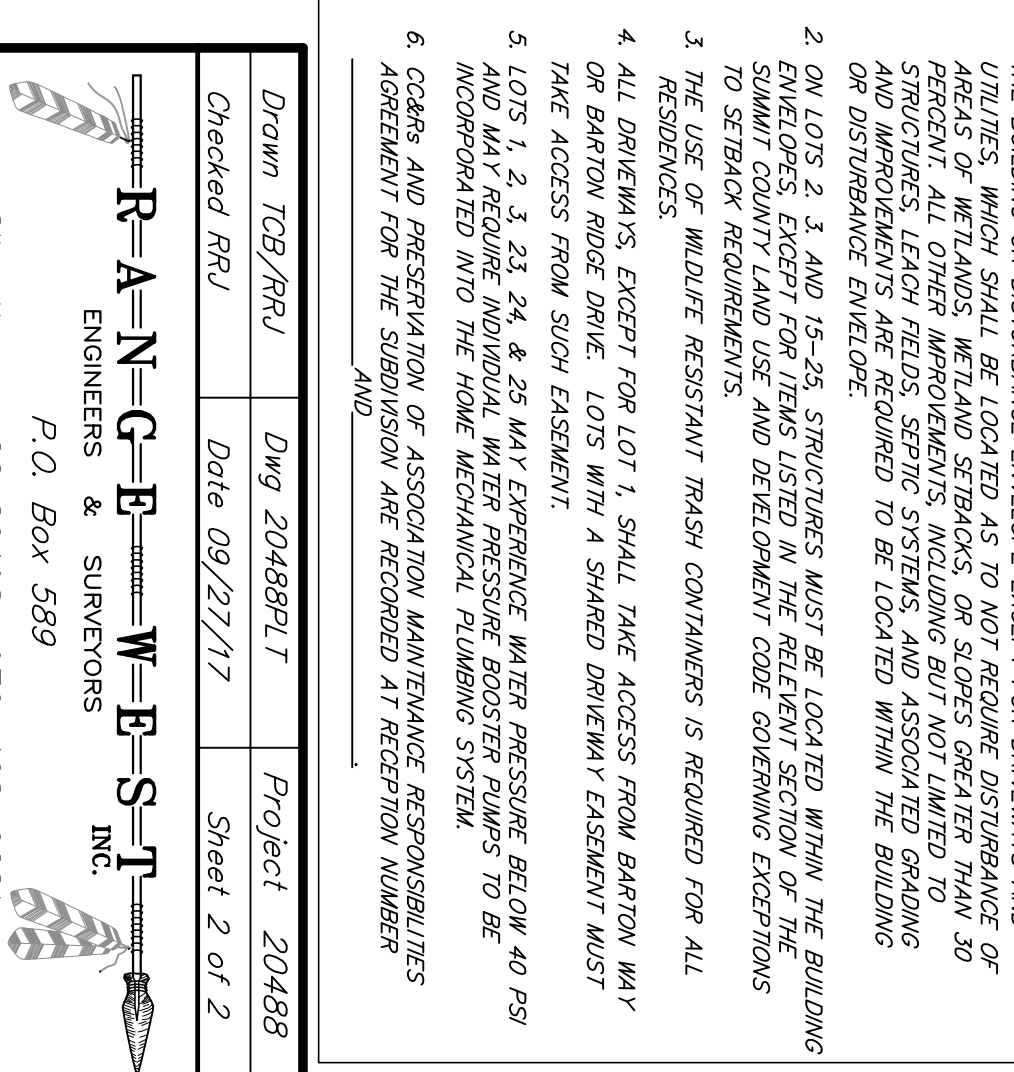
CURVE	RADIUS	LENGTH	CHORD	BEARING	DELTA
C1	197.15'	119.52'	171.25'	N 54°22'19" E	34°14'08"
C2	34.66'±	209.21'	192.74'	N 28°55'46" E	64°53'12"
C3	80.72'	118.42'	108.08'	N 23°21'51" E	64°03'17"
C4	545.65'	127.77'	127.05'	S 77°05'10" E	17°23'04"
C5	623.77'	189.37'	188.64'	S 77°05'10" E	17°23'04"
C6	254.16'	203.11'	192.75'	S 45°00'42" E	45°37'15"
C7	213.01'	122.88'	124.64'	S 24°54'47" W	33°03'09"
C8	249.44'	125.97'	124.64'	S 24°54'47" W	33°03'09"
C9	318.62'	251.09'	244.65'	S 16°53'52" E	45°07'26"
C10	318.62'	251.09'	244.65'	S 16°53'52" E	45°07'26"
C11	63.27'	72.49'	68.93'	S 38°53'52" E	65°58'52"

CURVE TABLE - EASEMENT

CURVE	RADIUS	LENGTH	CHORD	BEARING	DELTA
E1	250.00'	20.00'	20.00'	S 90°00'00" W	180°00'00"
E2	250.00'	20.00'	20.00'	S 90°00'00" W	180°00'00"
E3	250.00'	20.00'	20.00'	S 90°00'00" W	180°00'00"
E4	250.00'	20.00'	20.00'	S 90°00'00" W	180°00'00"
E5	250.00'	20.00'	20.00'	S 90°00'00" W	180°00'00"
E6	250.00'	20.00'	20.00'	S 90°00'00" W	180°00'00"
E7	250.00'	20.00'	20.00'	S 90°00'00" W	180°00'00"
E8	250.00'	20.00'	20.00'	S 90°00'00" W	180°00'00"
E9	250.00'	20.00'	20.00'	S 90°00'00" W	180°00'00"
E10	250.00'	20.00'	20.00'	S 90°00'00" W	180°00'00"
E11	250.00'	20.00'	20.00'	S 90°00'00" W	180°00'00"
E12	250.00'	20.00'	20.00'	S 90°00'00" W	180°00'00"
E13	250.00'	20.00'	20.00'	S 90°00'00" W	180°00'00"
E14	250.00'	20.00'	20.00'	S 90°00'00" W	180°00'00"
E15	250.00'	20.00'	20.00'	S 90°00'00" W	180°00'00"
E16	250.00'	20.00'	20.00'	S 90°00'00" W	180°00'00"
E17	250.00'	20.00'	20.00'	S 90°00'00" W	180°00'00"
E18	250.00'	20.00'	20.00'	S 90°00'00" W	180°00'00"
E19	250.00'	20.00'	20.00'	S 90°00'00" W	180°00'00"
E20	250.00'	20.00'	20.00'	S 90°00'00" W	180°00'00"
E21	250.00'	20.00'	20.00'	S 90°00'00" W	180°00'00"
E22	250.00'	20.00'	20.00'	S 90°00'00" W	180°00'00"
E23	250.00'	20.00'	20.00'	S 90°00'00" W	180°00'00"
E24	250.00'	20.00'	20.00'	S 90°00'00" W	180°00'00"
E25	250.00'	20.00'	20.00'	S 90°00'00" W	180°00'00"
E26	250.00'	20.00'	20.00'	S 90°00'00" W	180°00'00"
E27	250.00'	20.00'	20.00'	S 90°00'00" W	180°00'00"
E28	250.00'	20.00'	20.00'	S 90°00'00" W	180°00'00"
E29	250.00'	20.00'	20.00'	S 90°00'00" W	180°00'00"
E30	250.00'	20.00'	20.00'	S 90°00'00" W	180°00'00"

LINE TABLE - EASEMENT

LINE	BEARING	LENGTH	CHORD	DELTA
L1	S 90°00'00" W	20.00'	20.00'	180°00'00"
L2	S 90°00'00" W	20.00'	20.00'	180°00'00"
L3	S 90°00'00" W	20.00'	20.00'	180°00'00"
L4	S 90°00'00" W	20.00'	20.00'	180°00'00"
L5	S 90°00'00" W	20.00'	20.00'	180°00'00"
L6	S 90°00'00" W	20.00'	20.00'	180°00'00"
L7	S 90°00'00" W	20.00'	20.00'	180°00'00"
L8	S 90°00'00" W	20.00'	20.00'	180°00'00"
L9	S 90°00'00" W	20.00'	20.00'	180°00'00"
L10	S 90°00'00" W	20.00'	20.00'	180°00'00"
L11	S 90°00'00" W	20.00'	20.00'	180°00'00"
L12	S 90°00'00" W	20.00'	20.00'	180°00'00"
L13	S 90°00'00" W	20.00'	20.00'	180°00'00"
L14	S 90°00'00" W	20.00'	20.00'	180°00'00"
L15	S 90°00'00" W	20.00'	20.00'	180°00'00"
L16	S 90°00'00" W	20.00'	20.00'	180°00'00"
L17	S 90°00'00" W	20.00'	20.00'	180°00'00"
L18	S 90°00'00" W	20.00'	20.00'	180°00'00"
L19	S 90°00'00" W	20.00'	20.00'	180°00'00"
L20	S 90°00'00" W	20.00'	20.00'	180°00'00"
L21	S 90°00'00" W	20.00'	20.00'	180°00'00"
L22	S 90°00'00" W	20.00'	20.00'	180°00'00"
L23	S 90°00'00" W	20.00'	20.00'	180°00'00"
L24	S 90°00'00" W	20.00'	20.00'	180°00'00"
L25	S 90°00'00" W	20.00'	20.00'	180°00'00"
L26	S 90°00'00" W	20.00'	20.00'	180°00'00"
L27	S 90°00'00" W	20.00'	20.00'	180°00'00"
L28	S 90°00'00" W	20.00'	20.00'	180°00'00"
L29	S 90°00'00" W	20.00'	20.00'	180°00'00"
L30	S 90°00'00" W	20.00'	20.00'	180°00'00"



CURVE TABLE - LOTS

CURVE	RADIUS	LENGTH	CHORD	BEARING	DELTA
CL1	190.00'	39.74'	39.99'	S 124°24'24" W	177°17'40"
CL2	473.38'	251.68'	448.94'	S 24°12'02" W	50°21'27"
CL3	473.38'	66.64'	66.59'	S 42°37'04" W	08°01'57"
CL4	306.00'	84.06'	83.90'	S 36°24'17" W	15°42'20"
CL5	306.00'	84.06'	83.90'	S 36°24'17" W	15°42'20"
CL6	306.00'	84.06'	83.90'	S 36°24'17" W	15°42'20"
CL7	306.00'	84.06'	83.90'	S 36°24'17" W	15°42'20"
CL8	306.00'	84.06'	83.90'	S 36°24'17" W	15°42'20"
CL9	306.00'	84.06'	83.90'	S 36°24'17" W	15°42'20"
CL10	306.00'	84.06'	83.90'	S 36°24'17" W	15°42'20"
CL11	306.00'	84.06'	83.90'	S 36°24'17" W	15°42'20"
CL12	306.00'	84.06'	83.90'	S 36°24'17" W	15°42'20"
CL13	306.00'	84.06'	83.90'	S 36°24'17" W	15°42'20"
CL14	306.00'	84.06'	83.90'	S 36°24'17" W	15°42'20"
CL15	306.00'	84.06'	83.90'	S 36°24'17" W	15°42'20"
CL16	306.00'	84.06'	83.90'	S 36°24'17" W	15°42'20"
CL17	306.00'	84.06'	83.90'	S 36°24'17" W	15°42'20"
CL18	306.00'	84.06'	83.90'	S 36°24'17" W	15°42'20"
CL19	306.00'	84.06'	83.90'	S 36°24'17" W	15°42'20"
CL20	306.00'	84.06'	83.90'	S 36°24'17" W	15°42'20"
CL21	306.00'	84.06'	83.90'	S 36°24'17" W	15°42'20"
CL22	306.00'	84.06'	83.90'	S 36°24'17" W	15°42'20"
CL23	306.00'	84.06'	83.90'	S 36°24'17" W	15°42'20"
CL24	306.00'	84.06'	83.90'	S 36°24'17" W	15°42'20"

CURVE TABLE - LOTS

CURVE	RADIUS	LENGTH	CHORD	BEARING	DELTA
CL25	318.82'	50.99'	50.94'	S 34°47'55" W	09°09'50"
CL26	318.82'	50.99'	50.94'	S 34°47'55" W	09°09'50"
CL27	318.82'	50.99'	50.94'	S 34°47'55" W	09°09'50"
CL28	318.82'	50.99'	50.94'	S 34°47'55" W	09°09'50"
CL29	318.82'	50.99'	50.94'	S 34°47'55" W	09°09'50"
CL30	318.82'	50.99'	50.94'	S 34°47'55" W	09°09'50"
CL31	318.82'	50.99'	50.94'	S 34°47'55" W	09°09'50"
CL32	318.82'	50.99'	50.94'	S 34°47'55" W	09°09'50"
CL33	318.82'	50.99'	50.94'	S 34°47'55" W	09°09'50"
CL34	318.82'	50.99'	50.94'	S 34°47'55" W	09°09'50"
CL35	318.82'	50.99'	50.94'	S 34°47'55" W	09°09'50"
CL36	318.82'	50.99'	50.94'	S 34°47'55" W	09°09'50"
CL37	318.82'	50.99'	50.94'	S 34°47'55" W	09°09'50"
CL38	318.82'	50.99'	50.94'	S 34°47'55" W	09°09'50"
CL39	318.82'	50.99'	50.94'	S 34°47'55" W	09°09'50"
CL40	318.82'	50.99'	50.94'	S 34°47'55" W	09°09'50"
CL41	318.82'	50.99'	50.94'	S 34°47'55" W	09°09'50"
CL42	318.82'	50.99'	50.94'	S 34°47'55" W	09°09'50"
CL43	318.82'	50.99'	50.94'	S 34°47'55" W	09°09'50"
CL44	318.82'	50.99'	50.94'	S 34°47'55" W	09°09'50"
CL45	318.82'	50.99'	50.94'	S 34°47'55" W	09°09'50"
CL46	318.82'	50.99'	50.94'	S 34°47'55" W	09°09'50"
CL47	318.82'	50.99'	50.94'	S 34°47'55" W	09°09'50"
CL48	318.82'	50.99'	50.94'	S 34°47'55" W	09°09'50"

CURVE TABLE - BOUNDARY

CURVE	RADIUS	LENGTH	CHORD	BEARING	DELTA
C1	197.15'	119.52'	171.25'	N 54°22'19" E	34°14'08"
C2	34.66'±	209.21'	192.74'	N 28°55'46" E	64°53'12"
C3	80.72'	118.42'	108.08'	N 23°21'51" E	64°03'17"
C4	545.65'	127.77'	127.05'	S 77°05'10" E	17°23'04"
C5	623.77'	189.37'	188.64'	S 77°05'10" E	17°23'04"
C6	254.16'	203.11'	192.75'	S 45°00'42" E	45°37'15"
C7	213.01'	122.88'	124.64'	S 24°54'47" W	33°03'09"
C8	249.44'	125.97'	124.64'	S 24°54'47" W	33°03'09"
C9	318.62'	251.09'	244.65'	S 16°53'52" E	45°07'26"
C10	318.62'	251.09'	244.65'	S 16°53'52" E	45°07'26"
C11	63.27'	72.49'	68.93'	S 38°53'52" E	65°58'52"

CURVE TABLE - EASEMENT

CURVE	RADIUS	LENGTH	CHORD	BEARING	DELTA
E1	250.00'	20.00'	20.00'	S 90°00'00" W	180°00'00"
E2	250.00'	20.00'	20.00'	S 90°00'00" W	180°00'00"
E3	250.00'	20.00'	20.00'	S 90°00'00" W	180°00'00"
E4	250.00'	20.00'	20.00'	S 90°00'00" W	180°00'00"
E5	250.00'	20.00'	20.00'	S 90°00'00" W	180°00'00"
E6	250.00'	20.00'	20.00'	S 90°00'00" W	180°00'00"
E7	250.00'	20.00'	20.00'	S 90°00'00" W	180°00'00"
E8	250.00'	20.00'	20.00'	S 90°00'00" W	180°00'00"
E9	250.00'	20.00'	20.00'	S 90°00'00" W	180°00'00"
E10	250.00'	20.00'	20.00'	S 90°00'00" W	180°00'00"
E11	250.00'	20.00'	20.00'	S 90°00'00" W	180°00'00"
E12	250.00'	20.00'	20.00'	S 90°00'00" W	180°00'00"
E13	250.00'	20.00'	20.00'	S 90°00'00" W	180°00'00"
E14	250.00'	20.00'	20.00'	S 90°00'00" W	180°00'00"
E15	250.00'	20.00'	20.00'	S 90°00'00" W	180°00'00"
E16	250.00'	20.00'	20.00'	S 90°00'00" W	180°00'00"
E17	250				